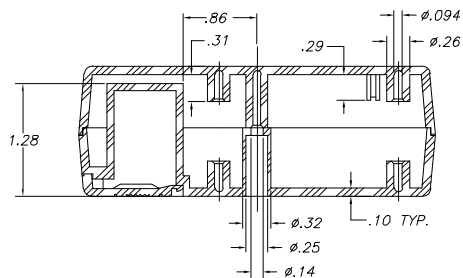
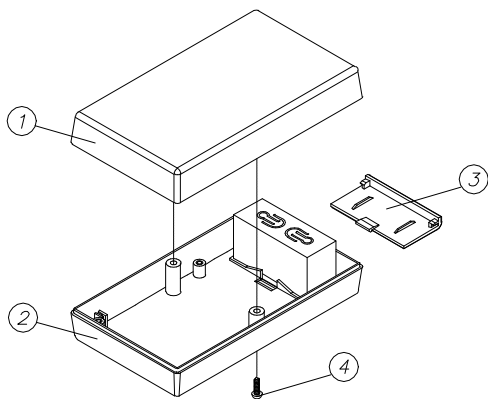
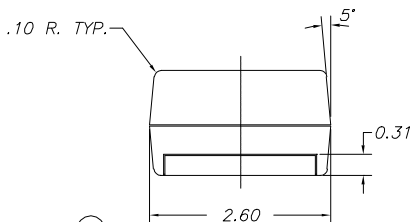
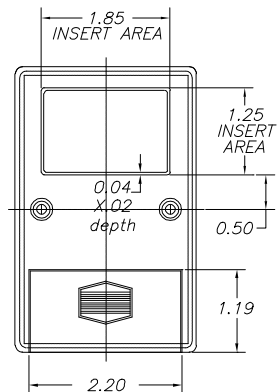
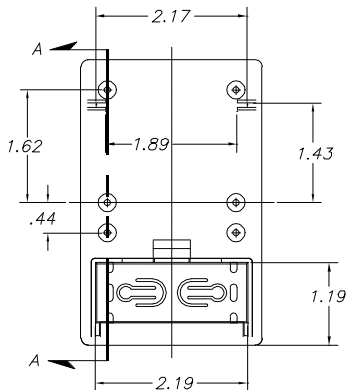
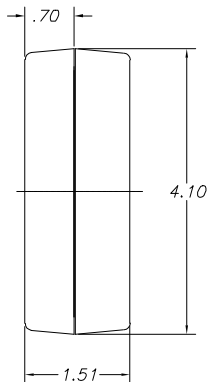


SERPAC 211

Electronics Enclosures



SECTION A-A

NOTES:
1. WHEN MACHINE OR I PLATES MODIFICATIONS ARE REQUIRED, USE THE CENTER OF THE BOX TO DIMENSION.

10-02-98

ALL DIMENSIONS $\pm .010$

ITEM	PART NO.	DESCRIPTION	ACCESSORIES	
1	2-1	PLASTIC TOP	PART NO.	DESCRIPTION
2	21	PLASTIC BOTTOM	51	FEET
3	1025	PLASTIC BATTERY COVER	319	PROTOTYPE GRID BOARD (HORIZ.)
4	6005	SCREWS (2)	419	PROTOTYPE CLAD BOARD (HORIZ.)

619 Commercial Ave. Covina, CA 91723

(626) 331-0517 Fax (626) 331-8584 <http://www.serpac.com>